



E-CORE™

LED WEATHERPROOF

TOSHIBA EUROPE GMBH

Hammfelddamm 8
D-41460 Neuss/Germany
Tel. : +49/2131-158-01
Fax : +49/2131-158-157

TOSHIBA SYSTEMES FRANCE S.A.S

7 rue Ampère
92800 Puteaux
Tél. : +33/147282828
Fax : +33/147286062

TOSHIBA INFORMATION SYSTEMS (U.K.) LTD

Toshiba Court
Weybridge Business Park
Addlestone Road
Weybridge
Surrey KT15 2UL
Tel. : +44/1932-841600



PRODUCT FUNDAMENTALS

- TOSHIBA E-CORE LED Weatherproof is a durable IP65 LED solution for applications such as pedestrians tunnels, car parks, corridors, showers, warehouses, etc. Equipped with a constant light output LED module (see 2.B), this fitting offers an outstanding efficacy* (82,7 lm/W) and an record lifetime of 40 000 hours (L70).



HOUSING / MOUNTING

Product code	LEDEUP00001N50	LEDEUP00002N50
Body	Polycarbonate	
Cover	Polycarbonate	PMMA
Finishing	RAL 7035 (Light Grey)	
Lighting outlet	1	
Type of installation	Surface mounting (vertical and horizontal) with clip for ceiling installation - Suspended / Trunk Rail	
Net weight	2.3kg	
Protection	Electric shock CLASS I / IP65 / IK08	Dust / Solid object CLASS I / IP65 / IK02
Shock resistance	CLASS I / IP65 / IK02	
Glow wire temp	850 °C	650 °C
Approval Mark	CE	
Feature	Excellent translucence - Very high impact strength Very strong and rigid - Good weather resistance	Scratch proof - Good UV resistance Highly transparent - Good chemical resistance

Logistic data			
Product code	EAN Code	Product and Specification	Size of Packaging (H x D x W)
LEDEUP00001N50	4974550433655	Luminaire with PC cover	110x120x1290
LEDEUP00002N50	4974550436359	Luminaire with PMMA cover	110x120x1290

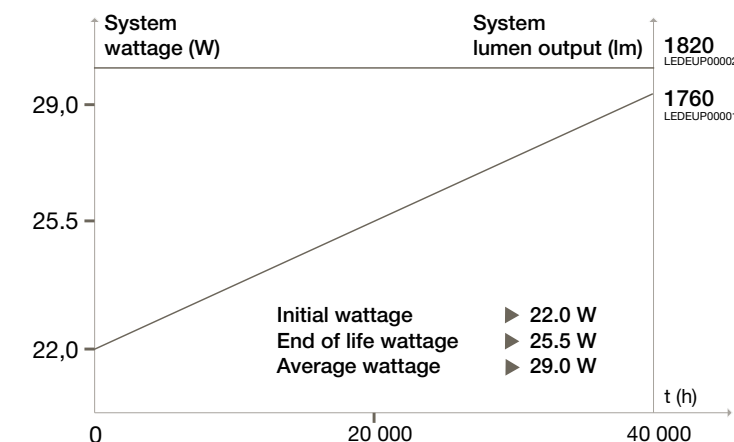
Electrical features / Control	
Rated voltage (V)	220-240 AC
Frequency (Hz)	50/60
Wattage (W)	Initial 22 W*
Max . Input Current (mA)	0.135
Power Factor	0.92
Dimming	No
Connection	3 x 1,5 - 2,5 mm ²

Packaging content :

- LED module
- fixing system
- Compression Grand
- instruction

CONSTANT LIGHT OUTPUT

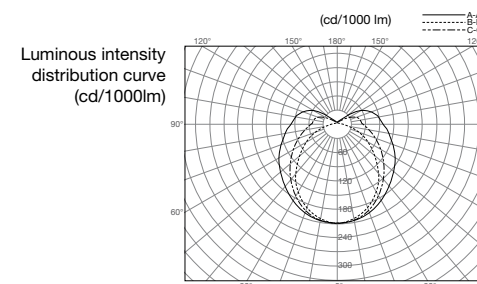
- Among its standard features, the E-CORE LED Weatherproof has a constant light output over its lifetime. This ensures that the photometric performance of an installation does not vary over time*, ensuring proper lighting conditions for the installation users.



OPTICAL FEATURES

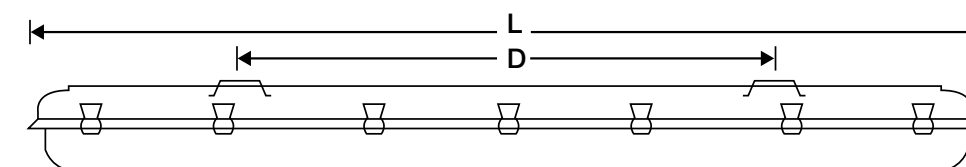
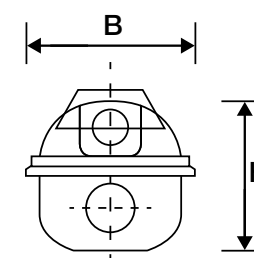
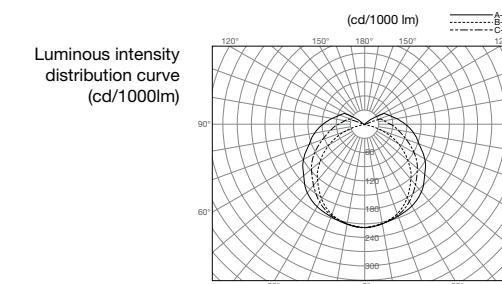
LEDEUP00001N50

Colour Temp. (K)	CRI	Beam angle (degrees)	System lumen output (lm)	Life time (h)
5000K	73	A-A : 84 B-B : 50	1760	40.000 h



LEDEUP00002N50

Colour Temp. (K)	CRI	Beam angle (degrees)	System lumen output (lm)	Life time (h)
5000K	73	A-A : 72 B-B : 54	1820	40.000 h



- L 1287 / B 102 / H 105 / D 600 mm

* average 26W over lifetime